

# Functional MRI in Clinical Research and Practice

## Design Workshop Introduction



# Clinical fMRI Study Plan

Abstract

Research questions

Hypotheses

Methods

Expected Results

Limitations

**Title**  
**Investigators**  
**Abstract**

# Research Questions

- 1
- 2
- .....

# Hypotheses

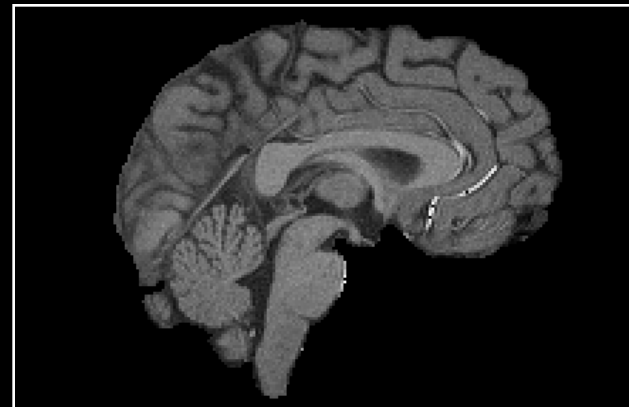
- 1
- 2
- ...

# Participant Characterization

- Inclusion criteria
- Exclusion criteria
  
- Psychometric testing
- Psychological characterization

# Acquisition Parameters: Spatial

- FOV
- Matrix
- Slice thickness
- Voxel volume
- Slice orientation
- Slice acquisition order
- TE
- TR



# Acquisition Parameters: Temporal

- Time points
- Session length
- Session number



# Task description

- Stimulus description
- Task timing
- Conditions
- Behavioral recordings

# Study description

- Study type
  - Observational
  - Random assignment – intervention
  - Observational - intervention
- Group structure
- Session timing

# Preprocessing

- Geometry correction
- Slice timing correction
- Realignment
- Spatial normalization
- Spatial filtering

# First-level model description

- Conditions of interest
- Nuisance variables
- Covariates of interest

# Second-level model description

- Statistical model description
- Factors?
- Regressors?
- Nuisance variables?
- Covariates of interest?

# Expected results and interpretations

- 1
- 2
- .....

# Limitations

# Clinical fMRI Study Plan

Abstract

Research questions

Hypotheses

Methods

Expected Results

Limitations



