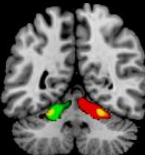
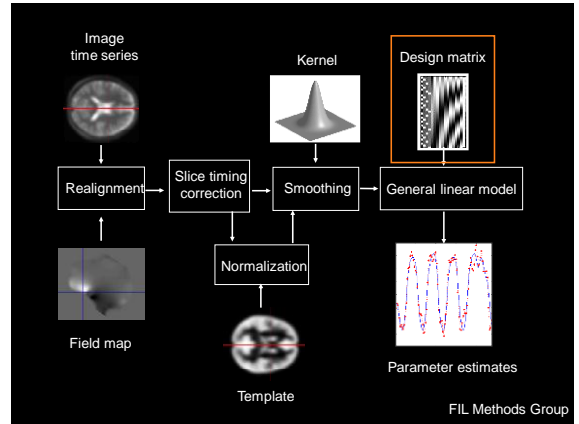
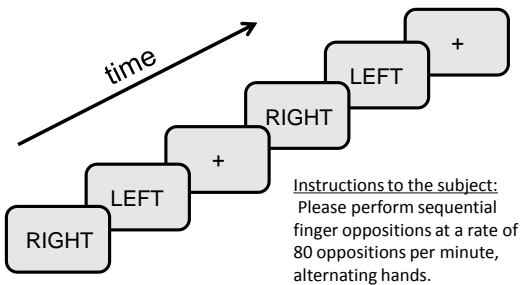


SPM8 for Basic and Clinical Investigators

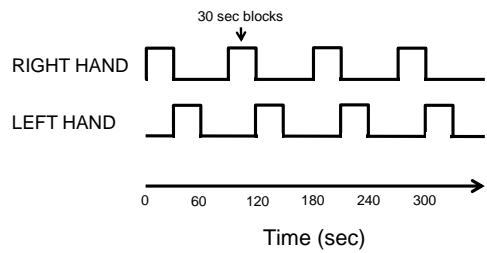
Analysis Overview

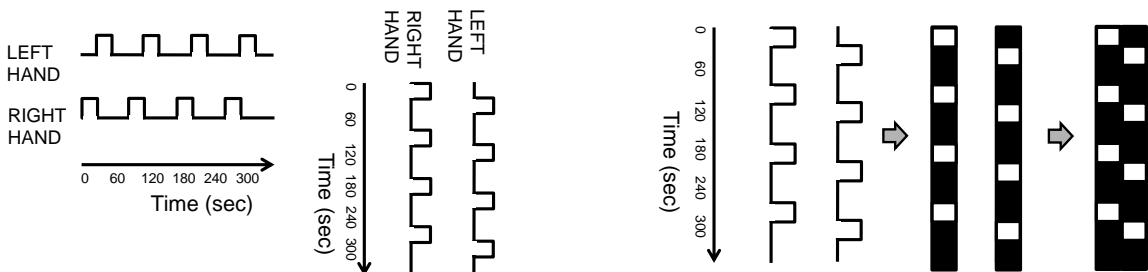
Finger Opposition Task



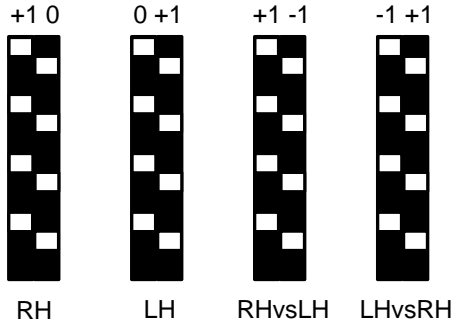
Finger Opposition Task Timing



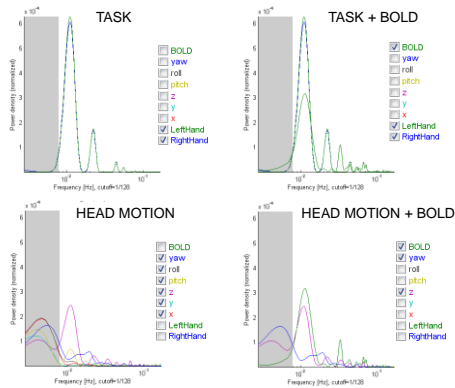
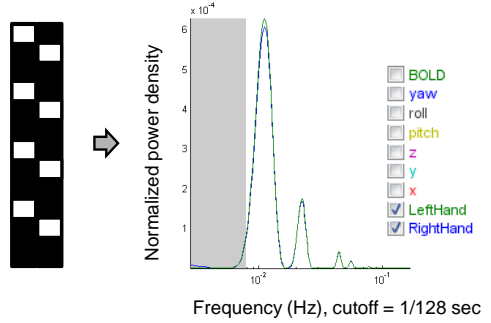
Finger Opposition Task Regressors



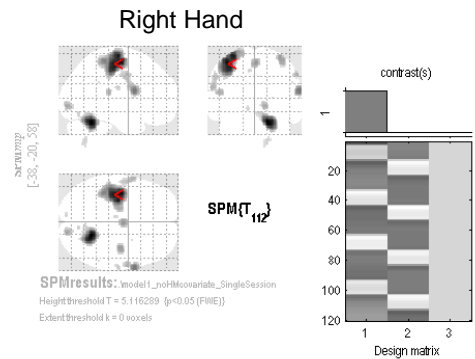
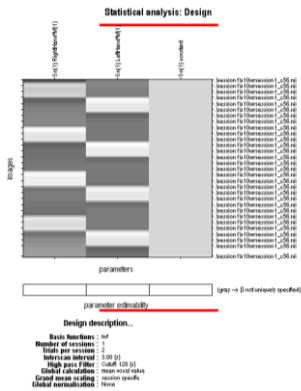
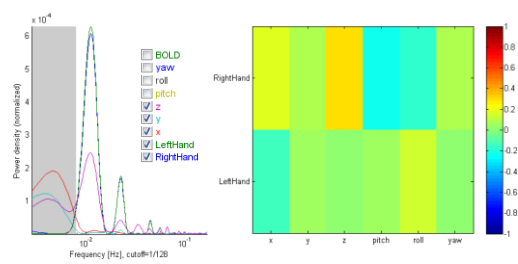
Finger Opposition Task Contrasts

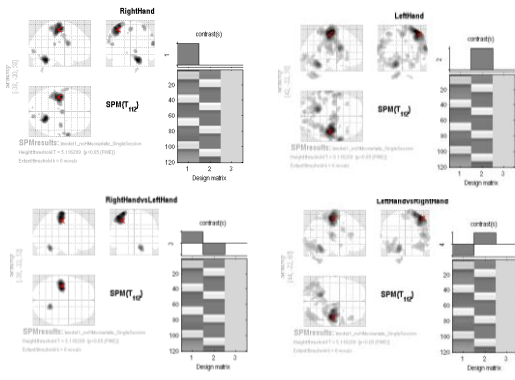


Frequency Domain Task Representation

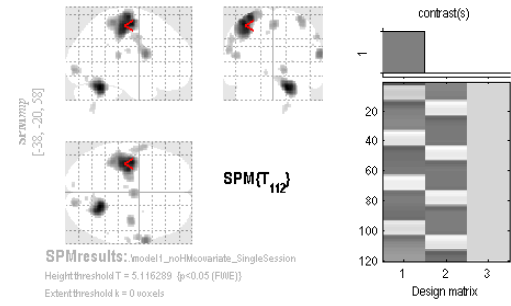


Head Motion – Task Correlation

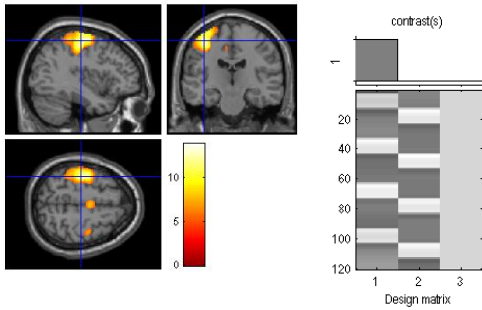




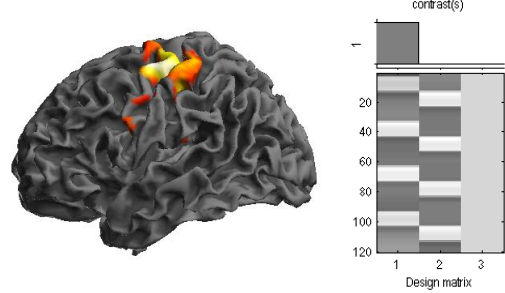
Maximum Intensity Projection



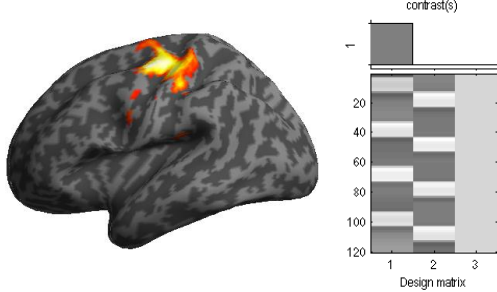
Multiplanar View



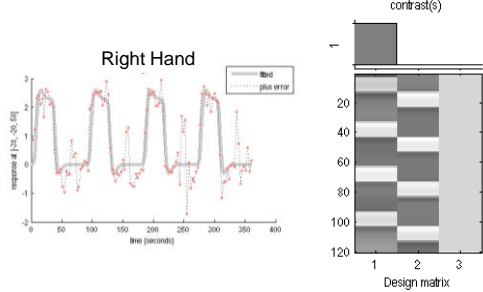
Cortical Surface



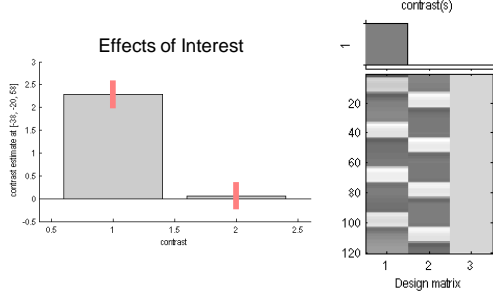
Inflated Surface



Fitted Responses



Contrast estimates and 90% CI

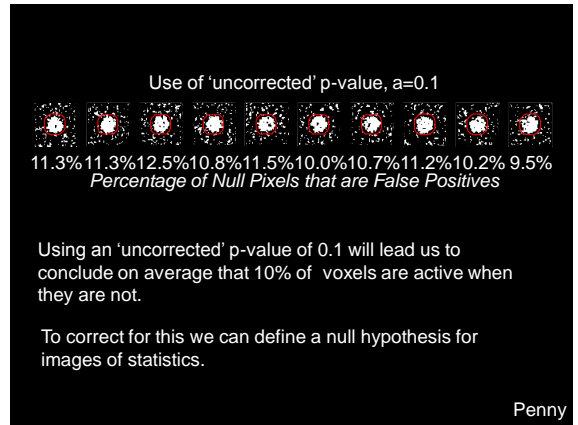
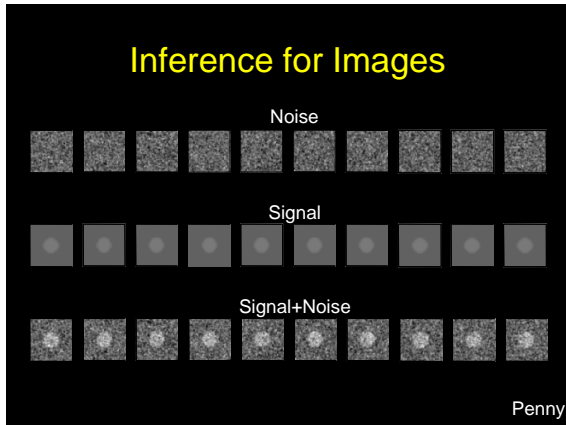


Statistics: p-values adjusted for search volume

set-level		cluster-level				peak-level				mm mm mm			
ρ	c	P_{FWE}	q_{FDR}	k_E	ρ_{uncorr}	P_{FWE}	q_{FDR}	T	(Z_{ij})	ρ_{uncorr}	mm mm mm		
0.00017	0.000	0.000	0.000	751	0.000	0.000	0.000	13.90	Inf	0.000	18 -52 -24		
								0.007	0.171	5.63	6 -62 -12		
				2145	0.000	0.000	0.000	13.02	Inf	0.000	-40 -10 60		
								0.000	0.000	12.62	Inf	0.000	-32 -14 70
								0.000	0.000	12.56	Inf	0.000	-36 -20 54
				159	0.000	0.000	0.000	9.09	7.84	0.000	64 8 18		
				185	0.000	0.000	0.000	7.88	7.01	0.000	2 -6 60		
				170	0.000	0.000	0.000	7.62	6.82	0.000	36 -12 66		
				91	0.000	0.000	0.000	7.26	6.56	0.000	16 -88 -2		
				56	0.000	0.000	0.000	7.13	6.46	0.000	-52 -28 18		
				46	0.001	0.001	0.001	7.07	6.42	0.000	62 -2 42		
				163	0.000	0.001	0.001	6.95	6.32	0.000	8 26		
								0.000	0.007	6.46	5.94	0.000	-58 -2 38
								0.002	0.054	5.97	5.55	0.000	-58 -8 44
				21	0.014	0.002	0.070	5.90	5.49	0.000	64 -14 24		
				12	0.052	0.003	0.089	5.83	5.43	0.000	8 -72 -12		
				32	0.003	0.005	0.124	5.73	5.36	0.000	18 -62 -48		
								0.025	0.517	5.21	5.00	0.000	14 -64 -56

table shows 3 local maxima more than 8.0mm apart

Height threshold: $T = 5.12, p = 0.000 (0.050)$ Degrees of freedom = [10, 112.0]
 Extent threshold: $k = 0$ voxels, $p = 1.000 (0.050)$ FWHM = 10.0 9.9 9.8 mm mm mm; 5.0 4.9 4.9 [voxels]
 Expected voxels per cluster, $\langle v \rangle = 3.126$ Volume: 1903512 = 237939 voxels = 1832.0 resels
 Expected number of clusters, $\langle c \rangle = 0.05$ Voxel size: 2.0 2.0 2.0 mm mm mm; (resel = 121.32 voxels)
 FWEp: 5.116, FDRp: 6.263, FWEc: 1, FDRc: 21 Page 7



Statistics: p-values adjusted for search volume

set-level		cluster-level				peak-level				mm mm mm			
ρ	c	P_{FWE}	q_{FDR}	k_E	ρ_{uncorr}	P_{FWE}	q_{FDR}	T	(Z_{ij})	ρ_{uncorr}	mm mm mm		
0.00017	0.000	0.000	0.000	751	0.000	0.000	0.000	13.90	Inf	0.000	18 -52 -24		
								0.007	0.171	5.63	6 -62 -12		
				2145	0.000	0.000	0.000	13.02	Inf	0.000	-40 -10 60		
								0.000	0.000	12.62	Inf	0.000	-32 -14 70
								0.000	0.000	12.56	Inf	0.000	-36 -20 54
				159	0.000	0.000	0.000	9.09	7.84	0.000	64 8 18		
				185	0.000	0.000	0.000	7.88	7.01	0.000	2 -6 60		
				170	0.000	0.000	0.000	7.62	6.82	0.000	36 -12 66		
				91	0.000	0.000	0.000	7.26	6.56	0.000	16 -88 -2		
				56	0.000	0.000	0.000	7.13	6.46	0.000	-52 -28 18		
				46	0.001	0.001	0.001	7.07	6.42	0.000	62 -2 42		
				163	0.000	0.001	0.001	6.95	6.32	0.000	8 26		
								0.000	0.007	6.46	5.94	0.000	-58 -2 38
								0.002	0.054	5.97	5.55	0.000	-58 -8 44
				21	0.014	0.002	0.070	5.90	5.49	0.000	64 -14 24		
				12	0.052	0.003	0.089	5.83	5.43	0.000	8 -72 -12		
				32	0.003	0.005	0.124	5.73	5.36	0.000	18 -62 -48		
								0.025	0.517	5.21	5.00	0.000	14 -64 -56

table shows 3 local maxima more than 8.0mm apart

Height threshold: $T = 5.12, p = 0.000 (0.050)$ Degrees of freedom = [10, 112.0]
 Extent threshold: $k = 0$ voxels, $p = 1.000 (0.050)$ FWHM = 10.0 9.9 9.8 mm mm mm; 5.0 4.9 4.9 [voxels]
 Expected voxels per cluster, $\langle v \rangle = 3.126$ Volume: 1903512 = 237939 voxels = 1832.0 resels
 Expected number of clusters, $\langle c \rangle = 0.05$ Voxel size: 2.0 2.0 2.0 mm mm mm; (resel = 121.32 voxels)
 FWEp: 5.116, FDRp: 6.263, FWEc: 1, FDRc: 21 Page 7

Use of 'corrected' p-value, alpha=0.1

FWE

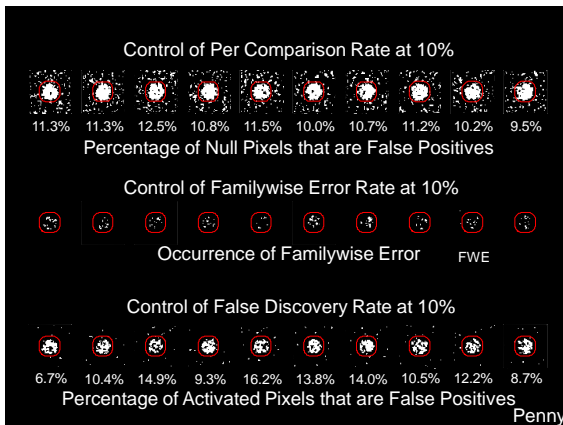
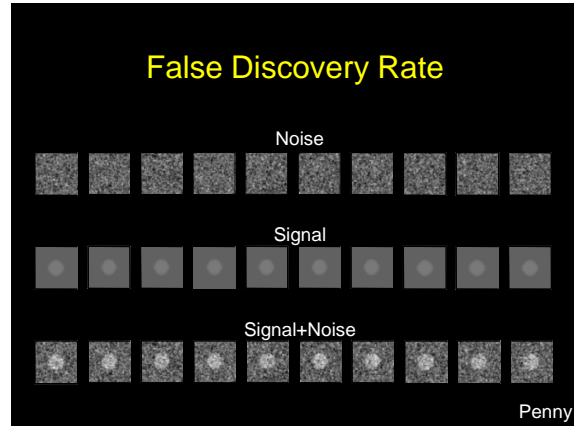
Penny

Statistics: p-values adjusted for search volume

set-level		cluster-level				peak-level				mm mm mm			
P	C	P _{FWE}	q _{FDR}	k _E	P _{uncorr}	P _{FWE}	q _{FDR}	T	(Z _p)	P _{uncorr}			
0.00017	0.000	0.000	0.000	751	0.000	0.000	0.000	13.90	Inf	0.000	18	-52	-24
						0.007	0.171	5.63	5.28	0.000	6	-62	-12
						0.000	0.000	13.02	Inf	0.000	-40	-10	60
						0.000	0.000	12.62	Inf	0.000	-32	-14	70
						0.000	0.000	12.56	Inf	0.000	-36	-20	54
						0.000	0.000	9.09	7.84	0.000	64	8	18
						0.000	0.000	7.88	7.01	0.000	2	-6	60
						0.000	0.000	7.62	6.82	0.000	36	-12	66
						0.000	0.000	7.26	6.56	0.000	16	-8	-2
						0.000	0.001	7.13	6.46	0.000	-52	-28	18
						0.000	0.001	7.07	6.42	0.000	62	-2	42
						0.000	0.001	6.95	6.32	0.000	-62	8	26
						0.000	0.007	6.46	5.94	0.000	-58	-2	38
						0.002	0.054	5.97	5.55	0.000	-58	-8	44
						0.002	0.070	5.90	5.49	0.000	64	-14	24
						0.003	0.063	5.83	5.43	0.000	8	-72	-12
						0.005	0.124	5.73	5.36	0.000	18	-62	-48
						0.025	0.517	5.21	5.00	0.000	14	-64	-56

table shows 3 local maxima more than 8.0mm apart

Height threshold: T = 5.12, p = 0.000 (0.050) Degrees of freedom = [10, 112.0]
 Extent threshold: k = 0 voxels, p = 1.000 (0.050) FillIM = 10.0 9.9 9.8 mm mm mm; 5.0 4.9 4.9 (voxels)
 Expected voxels per cluster, <= 3: 126 Volume: 1903512 = 237939 voxels = 1832.0 resels
 Expected number of clusters, <= 0.05 Voxel size: 2.0 2.0 2.0 mm mm mm; (resel = 121.32 voxels)
 FWEp: 5.116, FDRp: 6.263, FWEc: 1, FDRc: 21 Page 7

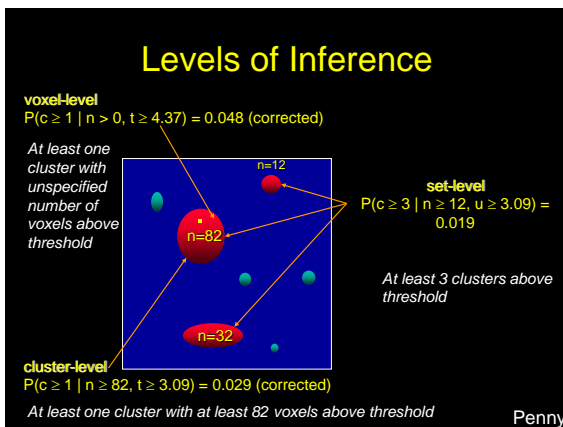


Statistics: p-values adjusted for search volume

set-level		cluster-level				peak-level				mm mm mm			
P	C	P _{FWE}	q _{FDR}	k _E	P _{uncorr}	P _{FWE}	q _{FDR}	T	(Z _p)	P _{uncorr}			
0.00017	0.000	0.000	0.000	751	0.000	0.000	0.000	13.90	Inf	0.000	18	-52	-24
						0.007	0.171	5.63	5.28	0.000	6	-62	-12
						0.000	0.000	13.02	Inf	0.000	-40	-10	60
						0.000	0.000	12.62	Inf	0.000	-32	-14	70
						0.000	0.000	12.56	Inf	0.000	-36	-20	54
						0.000	0.000	9.09	7.84	0.000	64	8	18
						0.000	0.000	7.88	7.01	0.000	2	-6	60
						0.000	0.000	7.62	6.82	0.000	36	-12	66
						0.000	0.000	7.26	6.56	0.000	16	-8	-2
						0.000	0.001	7.13	6.46	0.000	-52	-28	18
						0.000	0.001	7.07	6.42	0.000	62	-2	42
						0.000	0.000	6.95	6.32	0.000	-62	8	26
						0.000	0.007	6.46	5.94	0.000	-58	-2	38
						0.002	0.054	5.97	5.55	0.000	-58	-8	44
						0.002	0.070	5.90	5.49	0.000	64	-14	24
						0.003	0.063	5.83	5.43	0.000	8	-72	-12
						0.005	0.124	5.73	5.36	0.000	18	-62	-48
						0.025	0.517	5.21	5.00	0.000	14	-64	-56

table shows 3 local maxima more than 8.0mm apart

Height threshold: T = 5.12, p = 0.000 (0.050) Degrees of freedom = [10, 112.0]
 Extent threshold: k = 0 voxels, p = 1.000 (0.050) FillIM = 10.0 9.9 9.8 mm mm mm; 5.0 4.9 4.9 (voxels)
 Expected voxels per cluster, <= 3: 126 Volume: 1903512 = 237939 voxels = 1832.0 resels
 Expected number of clusters, <= 0.05 Voxel size: 2.0 2.0 2.0 mm mm mm; (resel = 121.32 voxels)
 FWEp: 5.116, FDRp: 6.263, FWEc: 1, FDRc: 21 Page 7



Statistics: p-values adjusted for search volume

set-level		cluster-level				peak-level				mm mm mm			
P	C	P _{FWE}	q _{FDR}	k _E	P _{uncorr}	P _{FWE}	q _{FDR}	T	(Z _p)	P _{uncorr}			
0.00017	0.000	0.000	0.000	751	0.000	0.000	0.000	13.90	Inf	0.000	18	-52	-24
				214	0.000	0.007	0.171	5.63	5.28	0.000	6	-62	-12
						0.000	0.000	13.02	Inf	0.000	-40	-10	60
						0.000	0.000	12.62	Inf	0.000	-32	-14	70
						0.000	0.000	12.56	Inf	0.000	-36	-20	54
						0.000	0.000	9.09	7.84	0.000	64	8	18
						0.000	0.000	7.88	7.01	0.000	2	-6	60
						0.000	0.000	7.62	6.82	0.000	36	-12	66
						0.000	0.000	7.26	6.56	0.000	16	-8	-2
						0.000	0.001	7.13	6.46	0.000	-52	-28	18
						0.000	0.001	7.07	6.42	0.000	62	-2	42
						0.000	0.000	6.95	6.32	0.000	-62	8	26
						0.000	0.007	6.46	5.94	0.000	-58	-2	38
						0.002	0.054	5.97	5.55	0.000	-58	-8	44
						0.002	0.070	5.90	5.49	0.000	64	-14	24
						0.003	0.063	5.83	5.43	0.000	8	-72	-12
						0.005	0.124	5.73	5.36	0.000	18	-62	-48
						0.025	0.517	5.21	5.00	0.000	14	-64	-56

table shows 3 local maxima more than 8.0mm apart

Height threshold: T = 5.12, p = 0.000 (0.050) Degrees of freedom = [10, 112.0]
 Extent threshold: k = 0 voxels, p = 1.000 (0.050) FillIM = 10.0 9.9 9.8 mm mm mm; 5.0 4.9 4.9 (voxels)
 Expected voxels per cluster, <= 3: 126 Volume: 1903512 = 237939 voxels = 1832.0 resels
 Expected number of clusters, <= 0.05 Voxel size: 2.0 2.0 2.0 mm mm mm; (resel = 121.32 voxels)
 FWEp: 5.116, FDRp: 6.263, FWEc: 1, FDRc: 21 Page 7

Statistics: p-values adjusted for search volume

set-level		cluster-level				peak-level				mm mm mm	
P	C	$P_{\text{FDR}}^{\text{cluster}}$	$q_{\text{FDR}}^{\text{cluster}}$	k_E	ρ_{uncorr}	$P_{\text{FDR}}^{\text{peak}}$	$q_{\text{FDR}}^{\text{peak}}$	T	Z_{peak}	ρ_{uncorr}	
0.00017	0.000	0.000	751	0.000	0.000	0.000	13.90	Inf	0.000	18	-52 -24
											6 -62 -12
											-40 -10 60
											-32 -14 70
											-26 -20 54
											64 8 18
											2 -6 60
											36 -12 66
											16 -38 -2
											-52 -28 18
											62 -2 42
											-62 8 26
											-58 -2 38
											-58 -8 44
											64 -14 24
											8 -72 -12
											18 -62 -48
											14 -64 -56

table shows 3 local maxima more than 8.0mm apart

Height threshold: T = 5.12, p = 0.000 (0.050) Degrees of freedom = [1, 0, 112.0]
 Extent threshold: k = 0 voxels, p = 1.000 (0.050) FWHM = 10.0 9.9 9.8 mm mm mm, 5.0 4.9 4.9 (voxels)
 Expected voxels per cluster: $\lambda_{\text{c}} = 3.126$ Volume: 1903512 = 237939 voxels = 1832.0 resels
 Expected number of clusters: $\lambda_{\text{c}} > 0.05$ Voxel size: 2.0 2.0 2.0 mm mm mm, (resel = 121.32 voxels)
 FWEp: 5.116, FDRp: 6.263, FWEc: 1, FDRc: 21 Page 7

